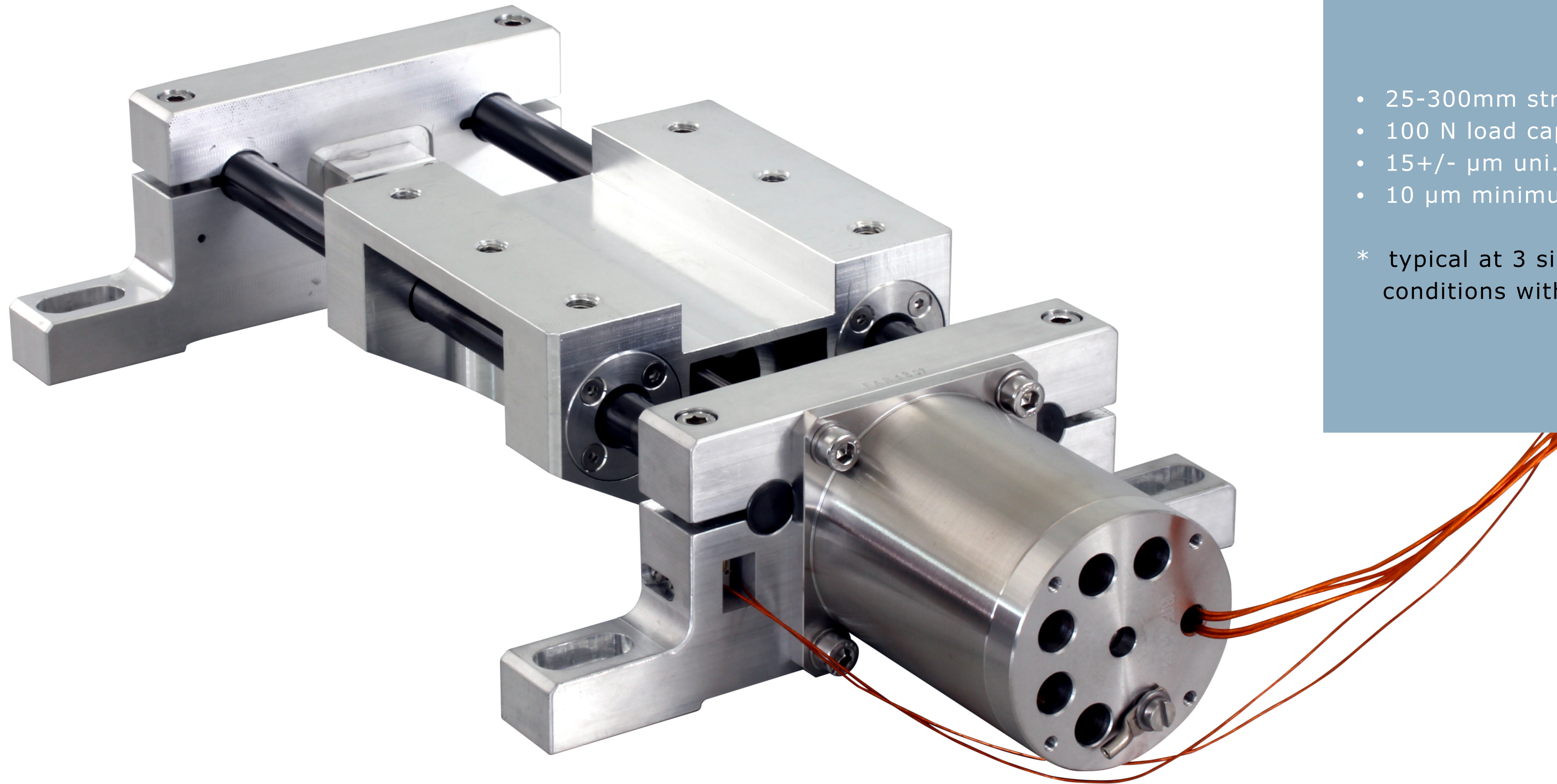


# RRX-HL-UHVC

RodRail linear stage for High Load in Cryogenic environments



- 25-300mm stroke
  - 100 N load capacity
  - 15+/-  $\mu\text{m}$  uni. Repeatability \*
  - 10  $\mu\text{m}$  minimum incremental motion
- \* typical at 3 sigma in working conditions with a measurement chart

Measured with interferometer in LN2 bath,  
with payload prepared for UHV.

# Questionnaire

Fill in this questionnaire and mail it to [ufficiovendite@vacuumfab.it](mailto:ufficiovendite@vacuumfab.it) to get our consultancy for the positioning system design, free of charges:

## CUSTOMER'S REFERENCE

Name, surname:  
Phone Number:

Institute/company:  
Email:

## WEIGHT/SPECIMEN INFORMATION

Dimensions (mm):

length

width

height

Shape: (description or better attach drawing)

Weight (g):

Center of gravity coordinates from the center of the carrier (mm):

X

Y

Z

Notes:

## POSITIONING REQUIREMENT

Travel range required (mm):

Positioning resolution required ( $\mu\text{m}$ ):

Repeatability required ( $\mu\text{m}$ ):

Applied force (N):

Applied Moment (Nm):

Speed required (mm/s):

Acceleration required ( $\text{mm/s}^2$ ):

Duty Cycle:

Other degrees of freedom required: please specify and possibly add a sketch and a description of the application

uni-directional

bi-directional

Fx

Fy

Fz

Mx

My

Mz

## WIRING REQUIREMENT

Cable length in air from the mechanics to the controller (m):

## CONTROLLER REQUIREMENT

Motion control type:

Positioning application type:

Computer connection port:

Software compatibility:

point to point

linear interpolation

contouring

high resolution

high repeatability

other (specify)

Ethernet

USB

EPICS

DLL

LabVIEW

TANGO

Notes:

Date and signature: